

# 平成23年(2011年)東北地方太平洋沖地震

The 2011 off the Pacific coast of Tohoku Earthquake

139°0'0"E

140°0'0"E

141°0'0"E

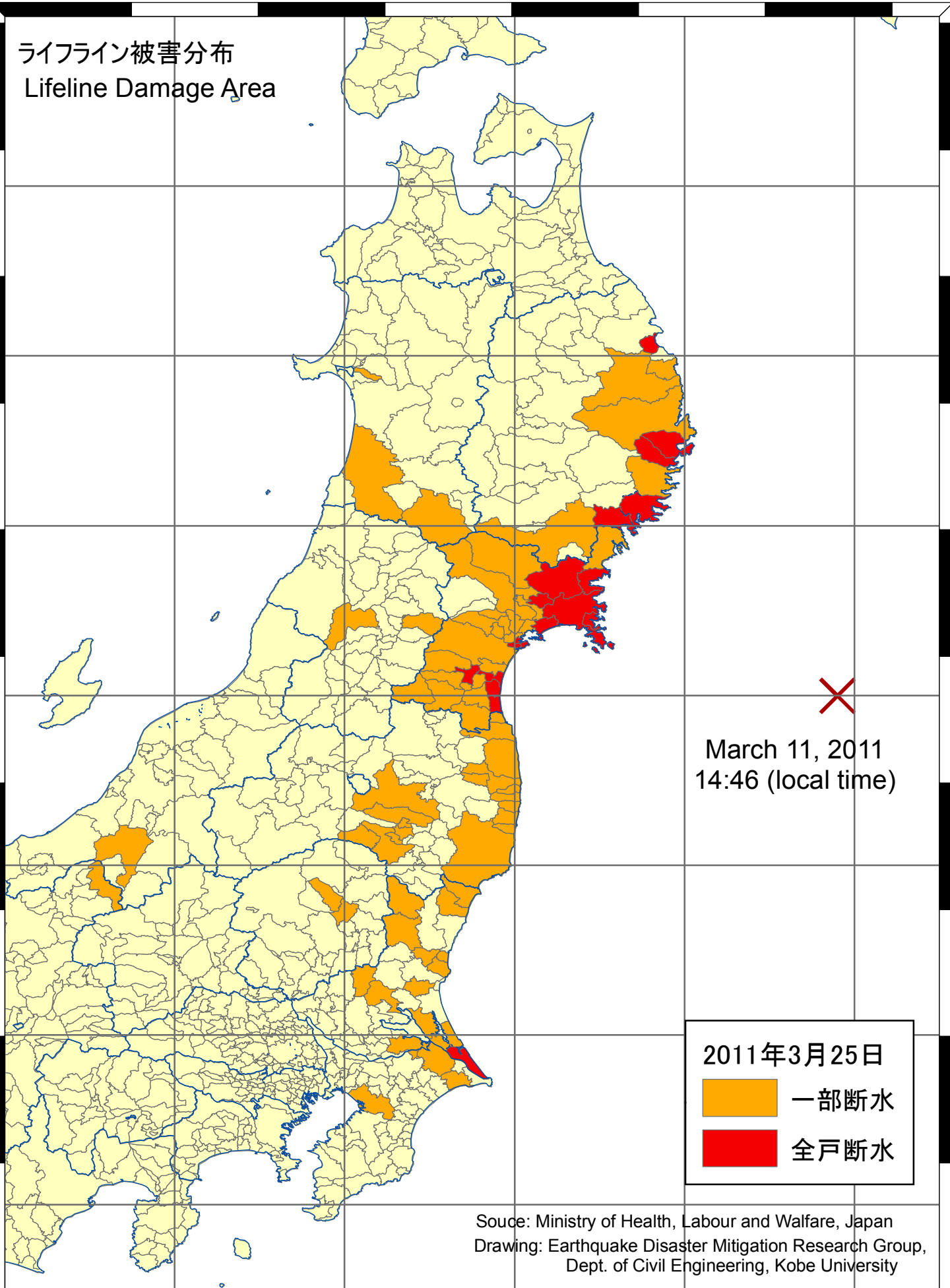
142°0'0"E

143°0'0"E

42°0'0"N  
41°0'0"N  
40°0'0"N  
39°0'0"N  
38°0'0"N  
37°0'0"N  
36°0'0"N  
35°0'0"N

41°0'0"N  
40°0'0"N  
39°0'0"N  
38°0'0"N  
37°0'0"N  
36°0'0"N  
35°0'0"N

ライフライン被害分布  
Lifeline Damage Area



March 11, 2011  
14:46 (local time)

2011年3月25日

-  一部断水
-  全戸断水

Source: Ministry of Health, Labour and Welfare, Japan  
Drawing: Earthquake Disaster Mitigation Research Group,  
Dept. of Civil Engineering, Kobe University

138°0'0"E 139°0'0"E 140°0'0"E 141°0'0"E 142°0'0"E 143°0'0"E