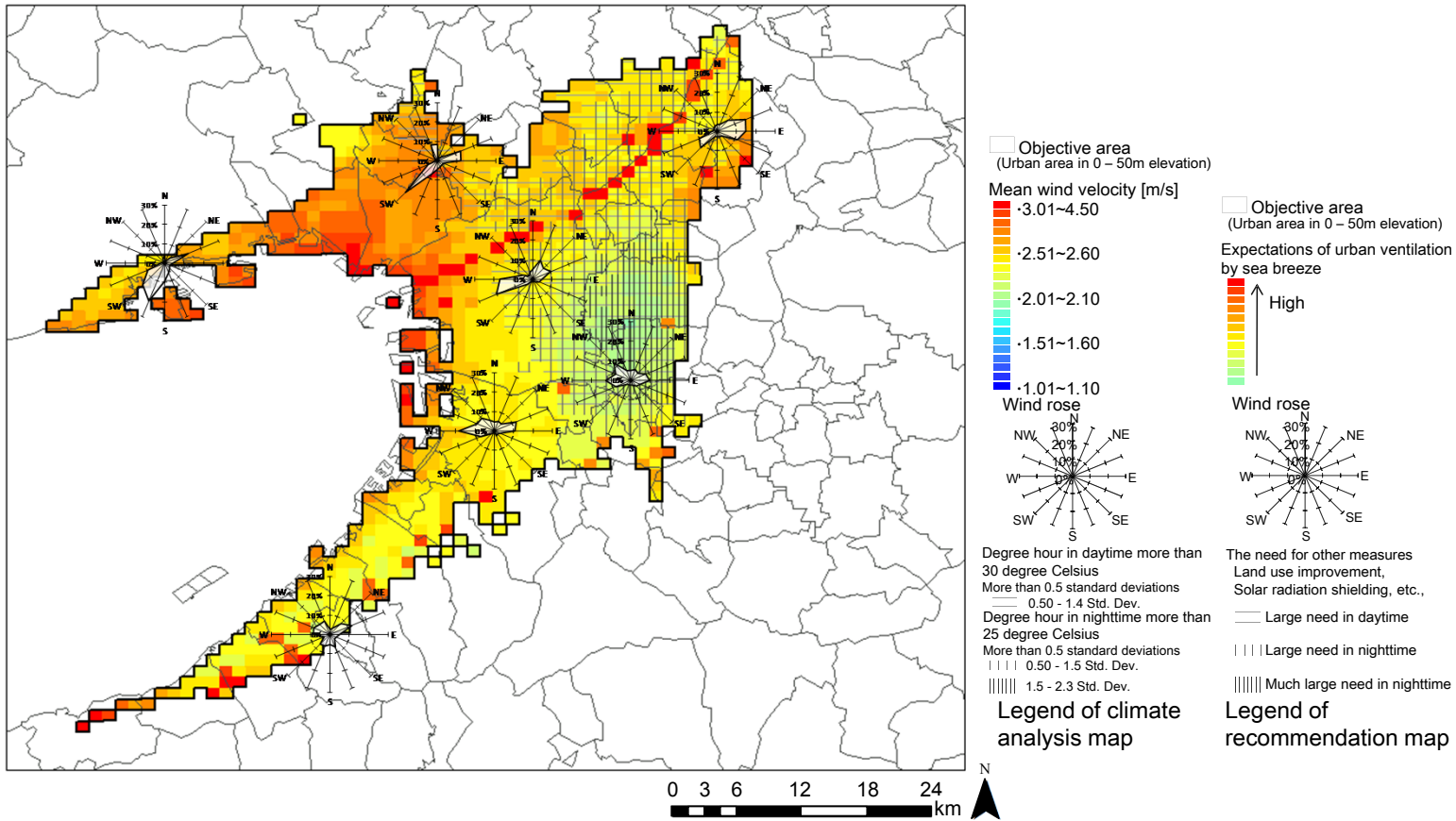
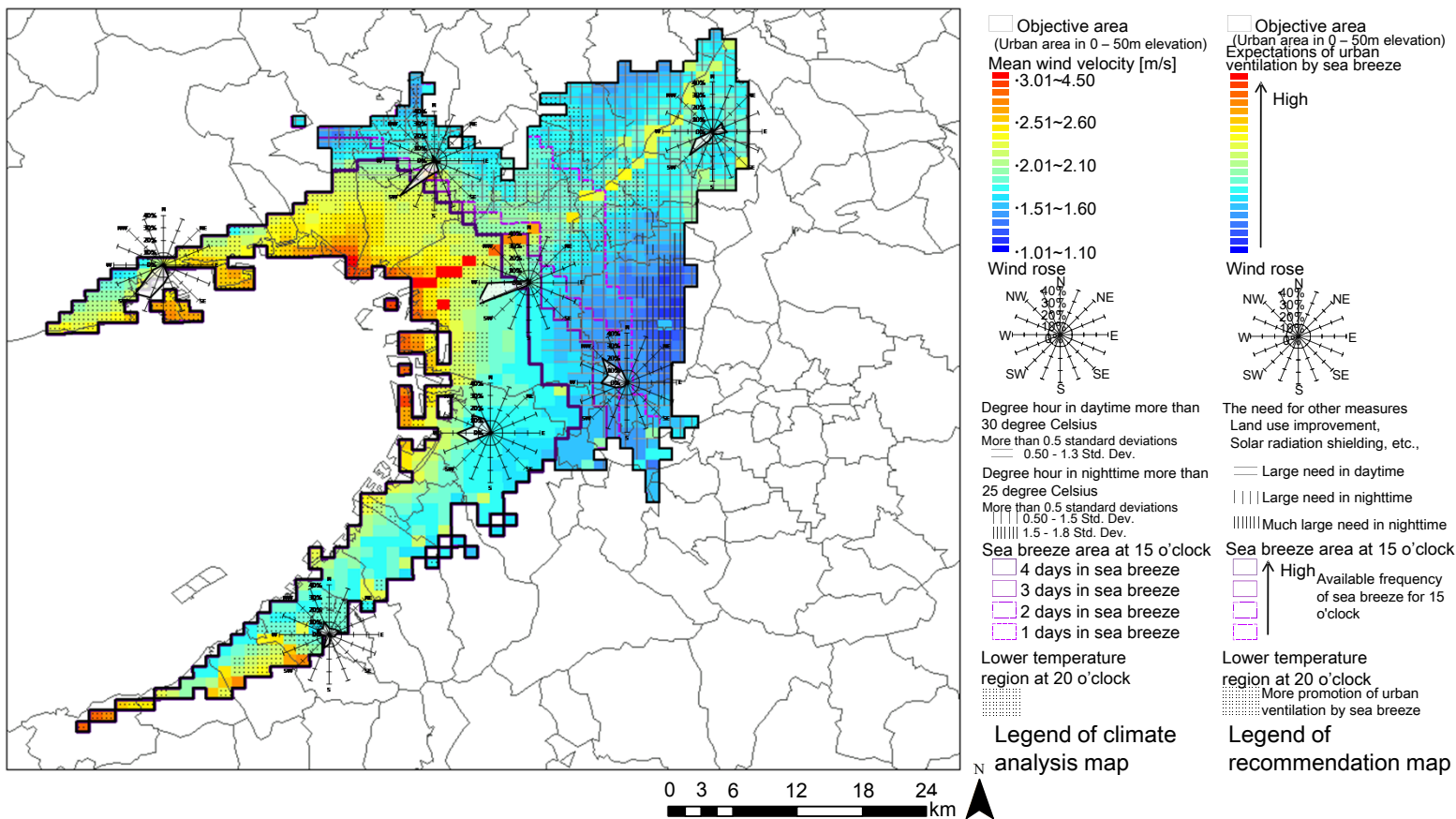


Climate atlas in Osaka region



Climate analysis and recommendation map in typical summer condition



Climate analysis and recommendation map in summer condition dominated by sea breeze

Making method and condition:

Distribution of air temperature and wind vector are analyzed in combination with elevation, land use and distance from the coast, based on the calculation results of WRF model which is calculated through August 2006.

Distribution of mean wind velocity, degree hours and wind roses are represented.

Lower temperature region is also represented on the map focusing on sea breeze.